

SAMATA LIVEBOARD

LIVEBOARD DIVING DESTINATIONS:

RAJA AMPAT, from December to March

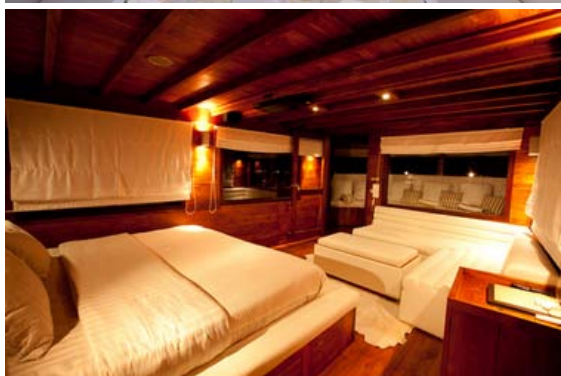
KOMODO, from April to August

EAST INDONESIA, from April to August

BANDA ISLANDS, from Sept. to October

AVAILABLE FOR:

Full charter boat & single guests



TECHNICAL SPECIFICATIONS

Year of built:	2007
Type:	Two mast wooden Phinisi Schooner
Length over deck:	
Length over all:	42 meters
Beam:	7.5 meters
Draft:	
Total displacement:	
Cruising speed:	6-8 knots
Engines:	Hyundai 6 cylinders, 320HP
Fuel Capacity:	10,000 lt
Generators:	
Water Storage:	13,000 lt
Water Makers:	6,000 lt per day
Voltage:	
Navigation & Communication:	Radar Furuno, Deep Sounder RayMarine, 2 GPS, VHF.
Cabins:	One Master Suite and 4 Suites, all with spacious and finished mosaic-tiled showers, hot water, luxurious soft towels, and all the amenities expected of a five star offering.
Crew:	Guide to customer ratio 1: 4
Diving:	2 high speed tenders: 6M Boston Whaler fibreglass with canopy and 150 horse power & 6M Zodiac and 50 horse power, 2 compressors Baeur Mariner 250, 24 aluminum 12lt tanks
Special UW and others Features:	A special aft diving deck area fitted out with state-of-the-art compressor and room for up to 20 tanks. This area also stores all the water sports equipment including wake boards, sea kayaks and fishing equipment.

Contact us:

INFO@CRUISINGINDONESIA.COM

WWW.CRUISINGINDONESIA.COM

E-mail us for a tailor-made dive cruise

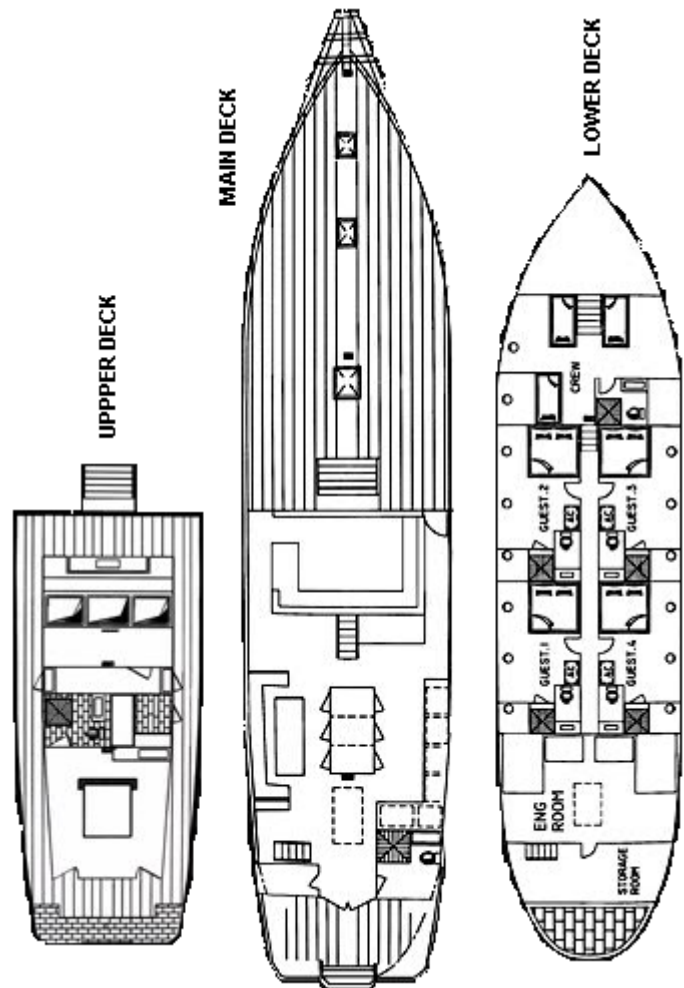
SAMATA LIVEBOARD

DIVING FACILITIES

A special aft diving deck area fitted out with state-of-the-art compressor and room for up to 20 tanks. This area also stores scuba diving gear and all the water sports equipment including wake boards, sea kayaks and fishing equipment.

UNDER REQUEST :

Full charter boat in all Indonesian Archipelago



Contact us:

INFO@CRUISINGINDONESIA.COM

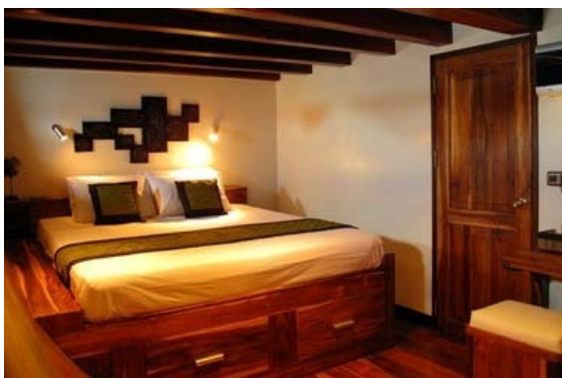
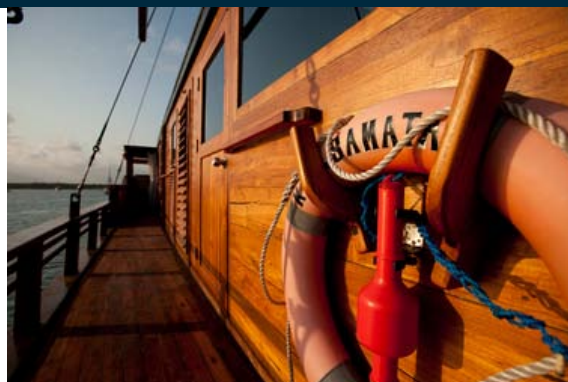
WWW.CRUISINGINDONESIA.COM

E-mail us for a tailor-made dive cruise

SAMATA LIVEBOARD

QUALITY FURNISHINGS

The Samata has been thoughtfully fitted out with carefully selected soft furnishings and accessories to make your stay with us a dream: quality Egyptian cottons, 1000 count bed linen, Leitner table linen, Alessi cutlery, and fluffy deep pile towels.



DIVING

The Samata's guests are encouraged to discover the beautiful corals, marine life and the hidden gems of underwater Indonesia, one of the world's most dynamic marine environments, boasting nearly every species of coral and tropical fish represented. With more than 20 years of experience, its highly qualified (PADI) Dive Instructor will instruct newcomers and assist experienced divers.

SPECIALS

Samata Liveboard offers exclusive, private and custom-made parties, beach picnics or full-on banquets to a variety of magical destinations. This gives a unique island experience for any event. Perhaps a special birthday or a romantic beach-wedding, a corporate get together or company party; our carefully selected destinations offer the perfect setting for all. Samata Liveboard is ideally for groups and families looking for tailor made cruises with plenty of non-diving excursions or simply for those who like to mix diving with other great pleasures in life.

CHARTERS

The Samata's private charters offer flexible yachting options and impeccable service. The crew of fourteen see to guests' every need: fine dining, exquisite wines, a whole array of recreational activities will create a journey of pleasurable adventure and provide the ultimate in liveboard cruising.

Contact us:

INFO@CRUISINGINDONESIA.COM

WWW.CRUISINGINDONESIA.COM

E-mail us for a tailor-made dive cruise

SAMATA LIVEBOARD

The Samata is a 42m luxury sailing yacht with the old charm of the traditional Phinisi and provides the highest standards of luxury accommodation combined with superior service in one atmosphere of total refinement and relax. Samata Liveabaord is suitable for private luxury charter in all the Indonesian Archipelago. Ideally for groups and families tailor made cruises.

Samata Liveaboard is a luxury sailing yacht hand built following the ancestral methods of construction of the traditional Indonesian Phinisi and executed by skilled master shipwrights of South Sulawesi, the trustees of this outstanding Bugi's heritage.



The Samata is ancient Sanskrit for tranquility, harmony and balance. Guests are assured of indulging in moments of pure relaxation, feel at harmony with nature around you and find your inner balance on this magical Phinisi yacht. She offers an atmosphere of conviviality and casual elegance ensuring guests a supreme combination of pure pampered comfort and exotic adventure.

Embark Samata for a marine and cultural odyssey into the lesser-frequented Indonesian islands. Explore secluded reefs and remote islands, snorkel, dive, wake board, fish, kayak and sail. Visit prehistoric wildlife, such as the Komodo dragons. View historic monuments, isolated arts and crafts villages. Relax with spa treatments and gourmet food, sunset dips and remote island picnics.

The Master Suite, located at the stern of the vessel on the top deck, not only has sweeping 270-degree views through the cabin's wraparound windows but has a beautifully modern and comfortable interior lounge area equipped with fridge, fold-away flat-screen television, fully controllable air conditioning and inter-suite communication system.

The yacht's luxurious suites are air-conditioned with large double beds and a magnificent en-suite bathroom. The spacious and beautifully finished showers provide abundant hot water, along with luxurious soft towels – and all the amenities expected of a five star hotel.

The dining experience aboard the Samata is one of the most memorable aspects of the voyage. Guests can enjoy gourmet meals in spacious dining areas with first class facilities and ambiance. The food is plentiful, fresh, and blends the unique flavours of the world together with time honoured classics creating diverse menus that expert chef then adds in his own touch of magic to... all enhanced by tables exquisitely set with top-quality china and dishware and embroidered table linens. An extensive wine cellar offers a variety of South African, Australian and local wines as well as a large selection of spirits and some delicious mixology creations specially made by expert cocktail waitress.

The exclusive service is well fitted to individual requirements, guaranteeing a more personal cruising atmosphere.

Contact us:

INFO@CRUISINGINDONESIA.COM

WWW.CRUISINGINDONESIA.COM

E-mail us for a tailor-made dive cruise

SAMATA LIVEBOARD

LIVEBOARD DIVING DESTINATIONS:

RAJA AMPAT, from December to March

KOMODO, from April to August

EAST INDONESIA, from April to August

BANDA ISLANDS, from Sept. to October

AVAILABLE FOR:

Full charter boat & single guests

UNDER REQUEST :

Full charter boat in all Indonesian Archipelago



Contact us:

INFO@CRUISINGINDONESIA.COM

WWW.CRUISINGINDONESIA.COM

E-mail us for a tailor-made dive cruise

CRUISING INDONESIA

Cruising Indonesia is specialized in tailor made cruises and committed to ensuring you a perfect diving holiday.

Just contact us to: info@cruisingindonesia.com and we will arrange everything you need, your liveaboard booking, your international & domestic flights, grounding services and more...

UNDER REQUEST

Bali Villas a Special Sojourn

Coming back from your diving trip it is time for indulging yourself while enjoying the legendary hospitality of Bali, the island of Gods. Do not lose the opportunity to stay in one of the magnificent Villas of Bali! Their rare and refined details will surprise you as well as our pricing list

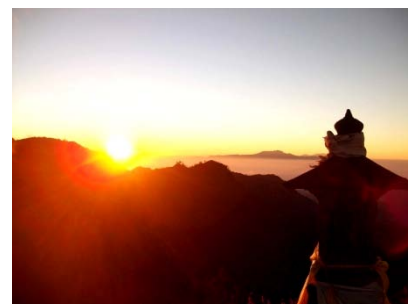


Discovering Yogyakarta Enigmatic Missing Civilizations

A journey for discovering Borobudur and Prambanan, a unique combination of ancient temples, history and culture, in our favorite "Yogyakarta enigmatic missing civilization Tour" by Cruising Indonesia.

Touring through the Volcanoes Road

Overland tour through an astonishing sceneries, Dieng Plateau, a marshy plateau compounds the floor of a complex volcanic caldera; Mount Bromo, a mount dedicated to the Hindu creator God Brahma, which sits in the middle of a vast plain called the "Sea of Sand"; and Ijen, an one kilometer wide turquoise colored acid crater lake, site of a labor-intensive sulfur mining operation, in which sulfur laden baskets are carried by hand from the crater floor. All in our favorite "Volcanoes Road Tour" by Cruising Indonesia.



Encountering Tanah Toraja

The animist highlanders of Sulawesi are a distinct ethnic group with enduring ancestral traditions. The people of Toraja or better Tana Toraja, has a culture where life revolves around death. Though the Tojaran peoples are deeply Christian, still maintain animist beliefs on death, performing extravagant ceremonies that last until our days. It's really unlike anything you've ever seen before.

Contact us:

[INFO@CRUISINGINDONESIA.COM](mailto:info@cruisingindonesia.com)

[WWW.CRUIISINGINDONESIA.COM](http://www.cruisingindonesia.com)

E-mail us for a tailor-made dive cruise

CRUISING INDONESIA

Add an amazing "ing" to your liveaboard experience. After or before your diving or leisure cruise try some of this amazing side trips by Cruising Indonesia.

Just contact us to: info@cruisingindonesia.com and we will arrange everything you need, your liveaboard booking, your international & domestic flights, grounding services and more...

UNDER REQUEST

Trekking in Baliem Valley

If yours is an adventurous spirit, a fascinating expedition in Baliem Valley will fulfill all your expectations... The highlands of Irian Jaya, is the region inhabited by the Dani Tribes and other sub tribes as Yali and Lani. The many different tribes have lived scattered across the highland plateau for 1000 years, they are small agrarian clans, isolated by the harsh terrain and divided by language, custom and tradition. This will be a journey through the time to encounter complex and primitive cultures, that look as come out of "the stone age".



Touring Trans Flores Highway

From Labuanbajo to Maumere, inland excursion discovering volcanoes, traditional villages and fascinating encounters with ethnic groups, as the Manggarai and the Ngada people, they still practice ancestral traditions, syncretism of animistic beliefs and Christianity. We will expend unforgettable time visiting Wae Rebo an old Manggaraian village, situated in pleasant, isolated mountain scenery; also Kelimutu, the three colors lake in the cone of a extinct volcano; and more.

Trekking to Moramo Waterfalls

Moramo Waterfall are only 65 km east of Kendari and easily accessible by car or by boat, crossing Moramo Bay, with wide panoramic scenery of the sea. Traversing 2 km of a beautiful plateau, with hundred of separate terraced plumes, the falls have seven main terraces, each with its own natural bathing pool. The top of the waterfall is some 100 meters above is basin pool.



Discovering Bali the Island of Gods

Let you captivate by the beauty of Balinese's culture, its wonderful people and astonishing landscapes. Bali is an island of scarce natural resources but rich of cultural ones. Famous by its traditional arts, theater, dance, and elaborate religious festivals, the Balinese culture is a dynamic force that is constantly synthesizing the old and the new, the traditional and the innovative. Its diversity makes her unique: stunning volcanic lakes, spectacular rice terraces, tropical beaches, ancient temples, water palaces, exotic melting pot of cultures and peoples in our favorite "Bali Island of Gods Tour" by Cruising Indonesia.

Contact us:

INFO@CRUISINGINDONESIA.COM

WWW.CRUIRINGINDONESIA.COM

E-mail us for a tailor-made dive cruise